

## FENESTRA 24V

<b>Insulation class</b>	Class III
<b>Beam angle</b>	151°
<b>Mounting</b>	Floor
<b>Lamps description</b>	Power Led: 4W - 304 lm ≠ FIXT 183 lm - 3000K/CRI 80 - 12-24V
<b>Environment</b>	Indoor, Outdoor
<b>Notes</b>	We recommend using a connection system with a degree of protection greater than or equal to the degree of protection of the luminaire.

### Technical description

Luminaire body in die-cast aluminum EN AB-47100 (low copper content). High-resistance coating: after a sandblasting treatment of all components to make the surface porous and ensure a greater adhesion of the paint, the external coating is applied with a double layer with epoxy powders according to the QUALICOAT standard. The first layer of epoxy powder gives chemical and mechanical resistance, the second finishing layer of polyester powder ensures resistance to UV rays and atmospheric agents. The painted surfaces are treated with alkaline and acidic washes, then rinsed with demineralized water, subjected to a chemical conversion treatment to protect against oxidation. Thanks to the use of a dual LED source and two laminar emitting lenses, it guarantees a coverage of 270° with homogeneous distribution and excellent color uniformity. UV-stabilized polycarbonate diffuser, silicone seal. Each luminaire is equipped with a mechanical adjustment system to compensate for the inclination of the sills, and to allow the correct orientation of the luminous beam.



### Fenestra 24V

designed by FLOS Outdoor

Luminaire for outdoor use for installation in a window compartment with LED light source. 24V power source not included. Possible to use standard 12V power supply. Equipped with a 1000 mm section of outgoing neoprene cable.

● F2251001	White
● F2251006	Grey
● F2251033	Anthracite
● F2251030	Black
● F2251018	Deep Brown

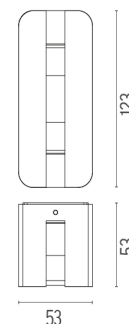
### ELECTRICAL

<b>Transformer type</b>	Electronic
<b>Transformer availability</b>	Separate item
<b>Transformer mounting</b>	Remote
<b>Emergency</b>	Without
<b>Voltage (V)</b>	24

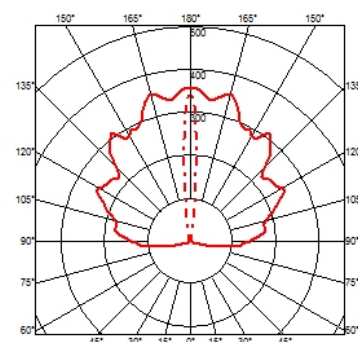
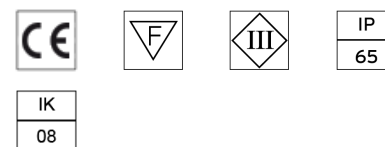
### PHYSICAL

<b>IK rating</b>	08
<b>Aiming</b>	Fixed
<b>Weight (kg)</b>	0,50
<b>Number of heads</b>	1

### DIMENSIONS



### CERTIFICATIONS





**Fenestra 24V .Accessories**



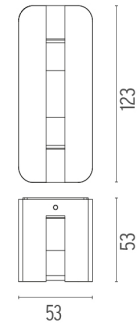
## Fenestra 24V

designed by FLOS Outdoor

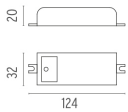
Luminaire for outdoor use for installation in a window compartment with LED light source. 24V power source not included. Possible to use standard 12V power supply. Equipped with a 1000 mm section of outgoing neoprene cable.

- F2251001 White
- F2251006 Grey
- F2251033 Anthracite
- F2251030 Black
- F2251018 Deep Brown

## DIMENSIONS



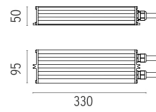
## Power Supply



○ RF25747

**Power supply 24V 10W.  
Non Dimmable**

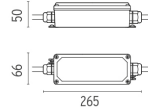
I 110-240V IP20 Class II selv.



○ RF25755

**Power supply 24V DC  
50W. Non Dimmable**

I 120-240V IP67 Class II selv.

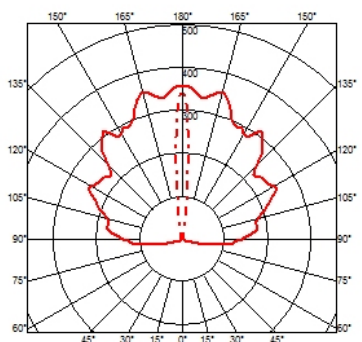


○ RF25749

**Power supply 24V DC  
70W. Non Dimmable**

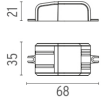
I 220-240V IP67 Class II selv.

## CERTIFICATIONS



# FLOS

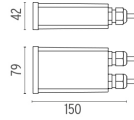
## Fenestra 24V .Accessories



RF25754

**Power supply 24V 8W.  
Non Dimmable**

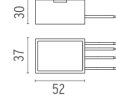
110-240V IP20 Class II selv.



RF25757

**Power supply 24V 10W.  
Non Dimmable**

110-240V IP67 Class II selv.



RF25748

**Power supply 24V 8W.  
Non Dimmable**

110-240V IP65 Class II selv.



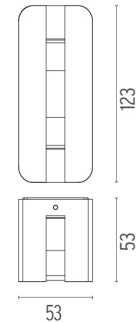
### Fenestra 24V

designed by FLOS Outdoor

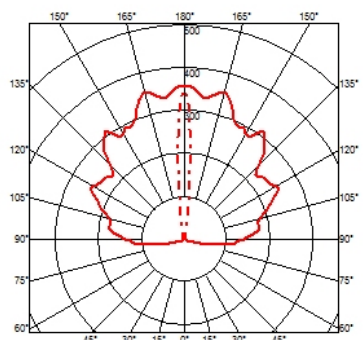
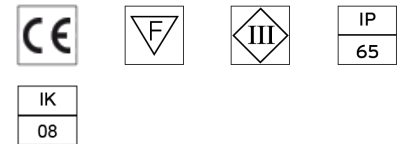
Luminaire for outdoor use for installation in a window compartment with LED light source. 24V power source not included. Possible to use standard 12V power supply. Equipped with a 1000 mm section of outgoing neoprene cable.

- F2251001 White
- F2251006 Grey
- F2251033 Anthracite
- F2251030 Black
- F2251018 Deep Brown

### DIMENSIONS



### CERTIFICATIONS



## Fenestra 24V . Lamps



**Power LED**

**Lamp category:**

LED

**Socket:**

Special base

**Lamp type:**

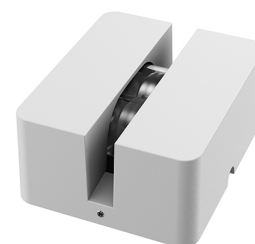
Power LED

## FENESTRA

<b>Insulation class</b>	Class I
<b>Beam angle</b>	151°
<b>Mounting</b>	Floor
<b>Lamps description</b>	Power Led: 5,5W - 304 lm ≠ FIXT 183 lm - 3000K/CRI 80 - 100-240V
<b>Environment</b>	Indoor, Outdoor
<b>Notes</b>	We recommend using a connection system with a degree of protection greater than or equal to the degree of protection of the luminaire.

### Technical description

Luminaire body in die-cast aluminum EN AB-47100 (low copper content). High-resistance coating: after a sandblasting treatment of all components to make the surface porous and ensure a greater adhesion of the paint, the external coating is applied with a double layer with epoxy powders according to the QUALICOAT standard. The first layer of epoxy powder gives chemical and mechanical resistance, the second finishing layer of polyester powder ensures resistance to UV rays and atmospheric agents. The painted surfaces are treated with alkaline and acidic washes, then rinsed with demineralized water, subjected to a chemical conversion treatment to protect against oxidation. Thanks to the use of a dual LED source and two laminar emitting lenses, it guarantees a coverage of 270° with homogeneous distribution and excellent color uniformity. UV-stabilized polycarbonate diffuser, silicone seal. Each luminaire is equipped with a mechanical adjustment system to compensate for the inclination of the sills, and to allow the correct orientation of the luminous beam.



### Fenestra

designed by FLOS Outdoor

Luminaire for outdoor use for installation in a window compartment with LED light source. Integrated 100/240V power source. Equipped with an 1000 mm section of outgoing neoprene cable.

● F2261001	White
● F2261006	Grey
● F2261033	Anthracite
● F2261030	Black
● F2261018	Deep Brown

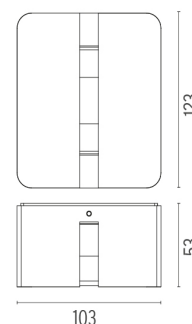
### ELECTRICAL

<b>Transformer type</b>	Electronic
<b>Transformer availability</b>	Inclusi
<b>Transformer mounting</b>	Integral
<b>Emergency</b>	Without
<b>Voltage (V)</b>	100/240

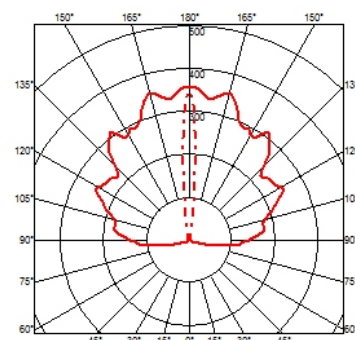
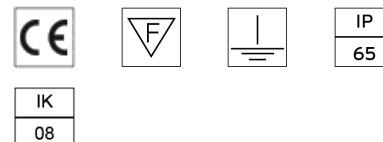
### PHYSICAL

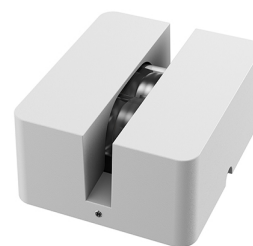
<b>IK rating</b>	08
<b>Aiming</b>	Fixed
<b>Weight (kg)</b>	0,70
<b>Number of heads</b>	1

### DIMENSIONS



### CERTIFICATIONS





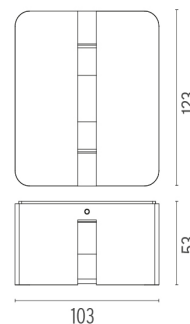
## Fenestra

designed by FLOS Outdoor

Luminaire for outdoor use for installation in a window compartment with LED light source. Integrated 100/240V power source. Equipped with an 1000 mm section of outgoing neoprene cable.

- F2261001 White
- F2261006 Grey
- F2261033 Anthracite
- F2261030 Black
- F2261018 Deep Brown

## DIMENSIONS



## CERTIFICATIONS



## Fenestra . Lamps



**Power LED**

**Lamp category:**  
LED

**Socket:**  
Special base

**Lamp type:**  
Power LED

