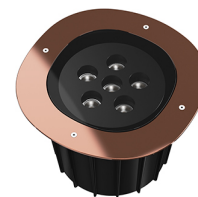


A-ROUND 315

Insulation class	Class II
Beam angle	10°
Mounting	Ground
Lamps description	Power Led: 42W - 3978 lm - 3000K/CRI 80 - 220-240V
Environment	Outdoor
Notes	We recommend using a connection system with a degree of protection greater than or equal to the degree of protection of the luminaire.





Technical description	External body made of stainless steel AISI 316L treated with the PVD process (Physical Vapour Deposition). Thanks to this innovative treatment, after the polishing or brushing process, according to the finishing choice, the surfaces of A-Round are coated with a thin film of metals such as zirconium and titanium which, combining with the steel at the molecular level, increase the resistance to both mechanical and to atmospheric agents, permitting the execution of elegant and durable finishings. The body of the luminaire is made of die-cast aluminum EN AB-47100 with low copper content, coated with two layers of paint with high resistance to corrosion. High-strength tempered clear glass, screen-printed to reduce glare. Driver for remote installation included, provided with M12 quick connector for watertight coupling. Installation requires a housing for flush mounting, to be ordered separately. It is necessary to provide an adequate level of gravel (> 300 mm) or a drain system to ensure drainage and avoid water stagnation. To ensure the sealing of the cable gland it is necessary to use flexible electric cables suitable for use in outdoor environments.
------------------------------	---



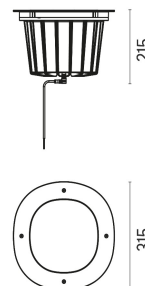
A-Round 315

designed by Piero Lissoni

Ground-recessed luminaire for outdoor use, walkable and trafficable, available in three sizes, with adjustable optics in various configurations. Integrated 220/240V power source. Remote housing required, to be ordered separately. Dimmable version on request.

	F4591015	Polished Copper
	F4591046	Brushed Bronze
	F4591044	Brushed Gold
	F4591056	Shoot peened steel

DIMENSIONS



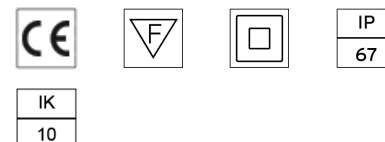
ELECTRICAL

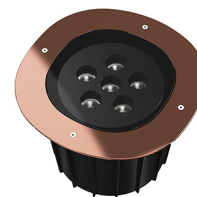
Transformer type	Electronic
Transformer availability	Included
Transformer mounting	Integral
Emergency	Without
Voltage (V)	220/240

PHYSICAL

IK rating	10
Aiming	Adjustable
Diameter (mm)	315
Number of heads	1

CERTIFICATIONS









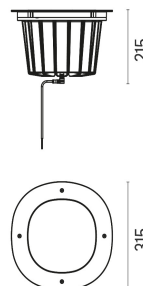
A-Round 315

designed by Piero Lissoni

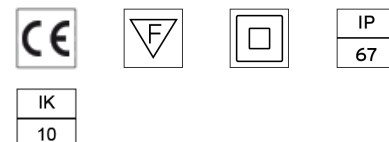
Ground-recessed luminaire for outdoor use, walkable and trafficable, available in three sizes, with adjustable optics in various configurations. Integrated 220/240V power source. Remote housing required, to be ordered separately. Dimmable version on request.

-  F4591015 Polished Copper
-  F4591046 Brushed Bronze
-  F4591044 Brushed Gold
-  F4591056 Shoot peened steel

DIMENSIONS



CERTIFICATIONS



A-Round 315 .Accessories

Optical



 F4557000

Honeycomb. 6 units Kit

 F4560000

Flood lens. 6 units Kit

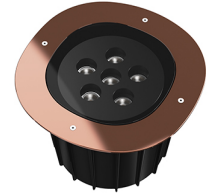
A-Round 315 .Accessories

Mounting



○ F4599000

Remote Housing



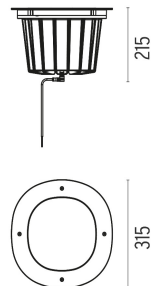
A-Round 315

designed by Piero Lissoni

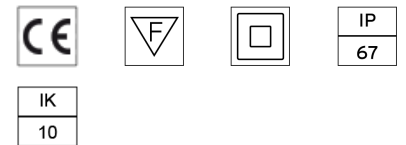
Ground-recessed luminaire for outdoor use, walkable and trafficable, available in three sizes, with adjustable optics in various configurations. Integrated 220/240V power source. Remote housing required, to be ordered separately. Dimmable version on request.

- F4591015 Polished Copper
- F4591046 Brushed Bronze
- F4591044 Brushed Gold
- F4591056 Shoot peened steel

DIMENSIONS



CERTIFICATIONS



Electrical



○ F1206000

3/4 way terminal block 3 poles IP68
7-12 mm cables



○ F990C00A000

2 way terminal block 3 poles IP68
7-12 mm cables

A-Round 315 . Lamps



Power LED

Lamp category:
LED

Socket:
Special base

Lamp type:
Power LED



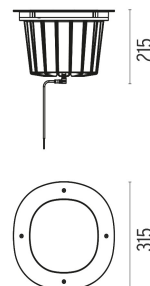
A-Round 315

designed by Piero Lissoni

Ground-recessed luminaire for outdoor use, walkable and trafficable, available in three sizes, with adjustable optics in various configurations. Integrated 220/240V power source. Remote housing required, to be ordered separately. Dimmable version on request.

- F4591015 Polished Copper
- F4591046 Brushed Bronze
- F4591044 Brushed Gold
- F4591056 Shoot peened steel

DIMENSIONS



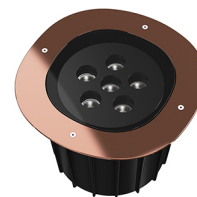
CERTIFICATIONS



A-ROUND 315

Insulation class	Class II
Beam angle	50°
Mounting	Ground
Lamps description	Power Led: 42W - 3978 lm - 3000K/CRI 80 - 220-240V
Environment	Outdoor
Notes	We recommend using a connection system with a degree of protection greater than or equal to the degree of protection of the luminaire.

Technical description	External body made of stainless steel AISI 316L treated with the PVD process (Physical Vapour Deposition). Thanks to this innovative treatment, after the polishing or brushing process, according to the finishing choice, the surfaces of A-Round are coated with a thin film of metals such as zirconium and titanium which, combining with the steel at the molecular level, increase the resistance to both mechanical and to atmospheric agents, permitting the execution of elegant and durable finishings. The body of the luminaire is made of die-cast aluminum EN AB-47100 with low copper content, coated with two layers of paint with high resistance to corrosion. High-strength tempered clear glass, screen-printed to reduce glare. Driver for remote installation included, provided with M12 quick connector for watertight coupling. Installation requires a housing for flush mounting, to be ordered separately. It is necessary to provide an adequate level of gravel (> 300 mm) or a drain system to ensure drainage and avoid water stagnation. To ensure the sealing of the cable gland it is necessary to use flexible electric cables suitable for use in outdoor environments.
------------------------------	---



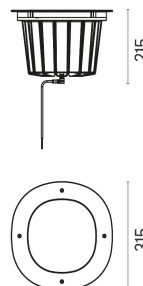
A-Round 315

designed by Piero Lissoni

Ground-recessed luminaire for outdoor use, walkable and trafficable, available in three sizes, with adjustable optics in various configurations. Integrated 220/240V power source. Remote housing required, to be ordered separately. Dimmable version on request.

	F4593015	Polished Copper
	F4593046	Brushed Bronze
	F4593044	Brushed Gold
	F4593056	Shoot peened steel

DIMENSIONS



ELECTRICAL

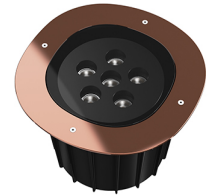
Transformer type	Electronic
Transformer availability	Included
Transformer mounting	Integral
Emergency	Without
Voltage (V)	220/240

PHYSICAL

IK rating	10
Aiming	Adjustable
Diameter (mm)	315
Number of heads	1

CERTIFICATIONS









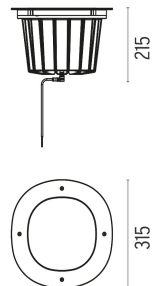
A-Round 315

designed by Piero Lissoni

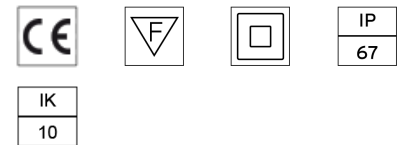
Ground-recessed luminaire for outdoor use, walkable and trafficable, available in three sizes, with adjustable optics in various configurations. Integrated 220/240V power source. Remote housing required, to be ordered separately. Dimmable version on request.

-  F4593015 Polished Copper
-  F4593046 Brushed Bronze
-  F4593044 Brushed Gold
-  F4593056 Shoot peened steel

DIMENSIONS




CERTIFICATIONS



A-Round 315 .Accessories

Optical



 F4557000

Honeycomb. 6 units Kit

 F4560000

Flood lens. 6 units Kit

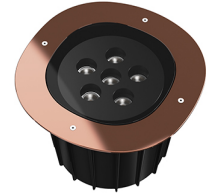
A-Round 315 .Accessories

Mounting



○ F4599000

Remote Housing



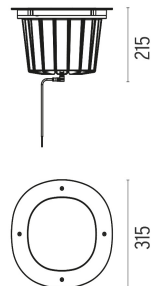
A-Round 315

designed by Piero Lissoni

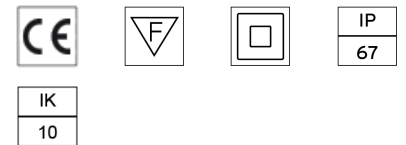
Ground-recessed luminaire for outdoor use, walkable and trafficable, available in three sizes, with adjustable optics in various configurations. Integrated 220/240V power source. Remote housing required, to be ordered separately. Dimmable version on request.

- F4593015 Polished Copper
- F4593046 Brushed Bronze
- F4593044 Brushed Gold
- F4593056 Shoot peened steel

DIMENSIONS



CERTIFICATIONS



Electrical



○ F1206000

3/4 way terminal block 3 poles IP68
7-12 mm cables



○ F990C00A000

2 way terminal block 3 poles IP68
7-12 mm cables

A-Round 315 . Lamps



Power LED

Lamp category:

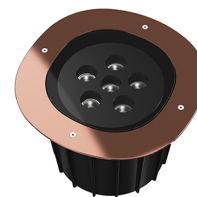
LED

Socket:

Special base

Lamp type:




Power LED



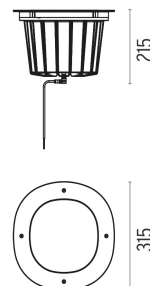
A-Round 315

designed by Piero Lissoni

Ground-recessed luminaire for outdoor use, walkable and trafficable, available in three sizes, with adjustable optics in various configurations. Integrated 220/240V power source. Remote housing required, to be ordered separately. Dimmable version on request.

-  F4593015 Polished Copper
-  F4593046 Brushed Bronze
-  F4593044 Brushed Gold
-  F4593056 Shoot peened steel

DIMENSIONS



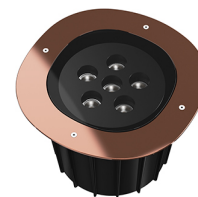
CERTIFICATIONS



A-ROUND 315

Insulation class	Class II
Beam angle	25°
Mounting	Ground
Lamps description	Power Led: 42W - 3978 lm - 3000K/CRI 80 - 220-240V
Environment	Outdoor
Notes	We recommend using a connection system with a degree of protection greater than or equal to the degree of protection of the luminaire.


Technical description	External body made of stainless steel AISI 316L treated with the PVD process (Physical Vapour Deposition). Thanks to this innovative treatment, after the polishing or brushing process, according to the finishing choice, the surfaces of A-Round are coated with a thin film of metals such as zirconium and titanium which, combining with the steel at the molecular level, increase the resistance to both mechanical and to atmospheric agents, permitting the execution of elegant and durable finishings. The body of the luminaire is made of die-cast aluminum EN AB-47100 with low copper content, coated with two layers of paint with high resistance to corrosion. High-strength tempered clear glass, screen-printed to reduce glare. Driver for remote installation included, provided with M12 quick connector for watertight coupling. Installation requires a housing for flush mounting, to be ordered separately. It is necessary to provide an adequate level of gravel (> 300 mm) or a drain system to ensure drainage and avoid water stagnation. To ensure the sealing of the cable gland it is necessary to use flexible electric cables suitable for use in outdoor environments.
------------------------------	---



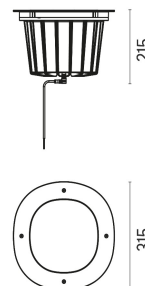
A-Round 315

designed by Piero Lissoni

Ground-recessed luminaire for outdoor use, walkable and trafficable, available in three sizes, with adjustable optics in various configurations. Integrated 220/240V power source. Remote housing required, to be ordered separately. Dimmable version on request.

	F4592015	Polished Copper
	F4592046	Brushed Bronze
	F4592044	Brushed Gold
	F4592056	Shoot peened steel

DIMENSIONS



ELECTRICAL

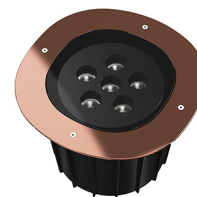
Transformer type	Electronic
Transformer availability	Included
Transformer mounting	Integral
Emergency	Without
Voltage (V)	220/240

PHYSICAL

IK rating	10
Aiming	Adjustable
Diameter (mm)	315
Number of heads	1

CERTIFICATIONS









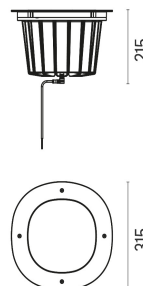
A-Round 315

designed by Piero Lissoni

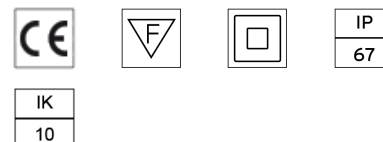
Ground-recessed luminaire for outdoor use, walkable and trafficable, available in three sizes, with adjustable optics in various configurations. Integrated 220/240V power source. Remote housing required, to be ordered separately. Dimmable version on request.

-  F4592015 Polished Copper
-  F4592046 Brushed Bronze
-  F4592044 Brushed Gold
-  F4592056 Shoot peened steel

DIMENSIONS



CERTIFICATIONS



A-Round 315 .Accessories

Optical



 F4557000

Honeycomb. 6 units Kit

 F4560000

Flood lens. 6 units Kit

A-Round 315 .Accessories

Mounting



○ F4599000

Remote Housing



A-Round 315

designed by Piero Lissoni

Ground-recessed luminaire for outdoor use, walkable and trafficable, available in three sizes, with adjustable optics in various configurations. Integrated 220/240V power source. Remote housing required, to be ordered separately. Dimmable version on request.

- F4592015 Polished Copper
- F4592046 Brushed Bronze
- F4592044 Brushed Gold
- F4592056 Shoot peened steel

Electrical



○ F1206000

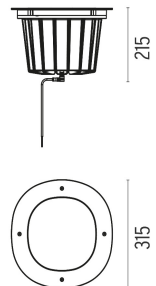
3/4 way terminal block 3 poles IP68
7-12 mm cables



○ F990C00A000

2 way terminal block 3 poles IP68
7-12 mm cables

DIMENSIONS



CERTIFICATIONS



A-Round 315 . Lamps



Power LED

Lamp category:

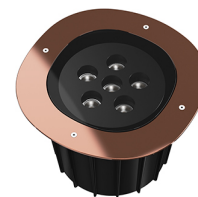
LED

Socket:

Special base

Lamp type:





Power LED



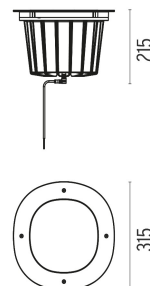
A-Round 315

designed by Piero Lissoni

Ground-recessed luminaire for outdoor use, walkable and trafficable, available in three sizes, with adjustable optics in various configurations. Integrated 220/240V power source. Remote housing required, to be ordered separately. Dimmable version on request.

-  F4592015 Polished Copper
-  F4592046 Brushed Bronze
-  F4592044 Brushed Gold
-  F4592056 Shoot peened steel

DIMENSIONS



CERTIFICATIONS

