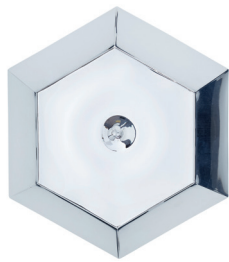


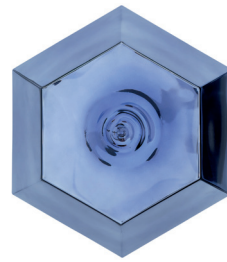
# CUT SURFACE IP44



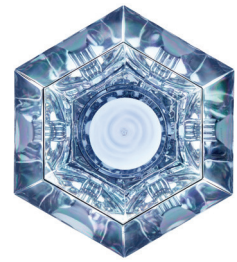
OFF



ON



OFF



ON

Futuristic and faceted, Cut is an exercise in optics. Its space-age mirror finish when off transforms into a translucent kaleidoscopic gem when on. Hypnotising reflections repeat infinitely within the diamond cut, vacuum metallised interior. Produced in chrome and smoke finishes, short and tall, pendant and surface – these are the latest adventures in our fascination with reflectivity, luminosity and transparency. Cluster for maximum effect. Available as Pendant and Surface Light.

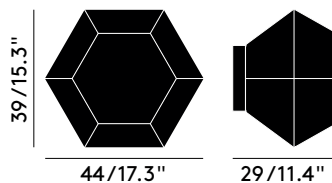
**CUT CHROME SURFACE EU**

Code  
CUSS01CHEU

**CUT SMOKE SURFACE EU**

Code  
CUSS01SMEU

<b>Year of Design</b>	2016
<b>Material</b>	Polycarbonate
<b>Bulb Spec</b>	E27 GLS 28W (max). Bulb not included.
<b>Cable Spec</b>	Detachable 250m/98.4in 3 core black rubber cable.



**Process**

A blow-moulded polycarbonate shade with a semi-metallised interior that is a solid mass when off and semi-transparent when lit.

**Cleaning Instructions**

Clean with a soft dry cloth only. Do not use polishing agents, water or abrasive materials when cleaning. Always switch off the electricity supply before cleaning

**Country of origin**

Germany

**Packaging**

Height	0.4 m
Width	0.45 m
Length	0.45 m
Weight	3 kg

**Product weight**

1.5 kg

**Dimmability**

Mains dimmable  
(depending on lamp application)

**Recommended LED bulb**

E27 LED Globe  
Available at [tomdixontrade.net](http://tomdixontrade.net)